

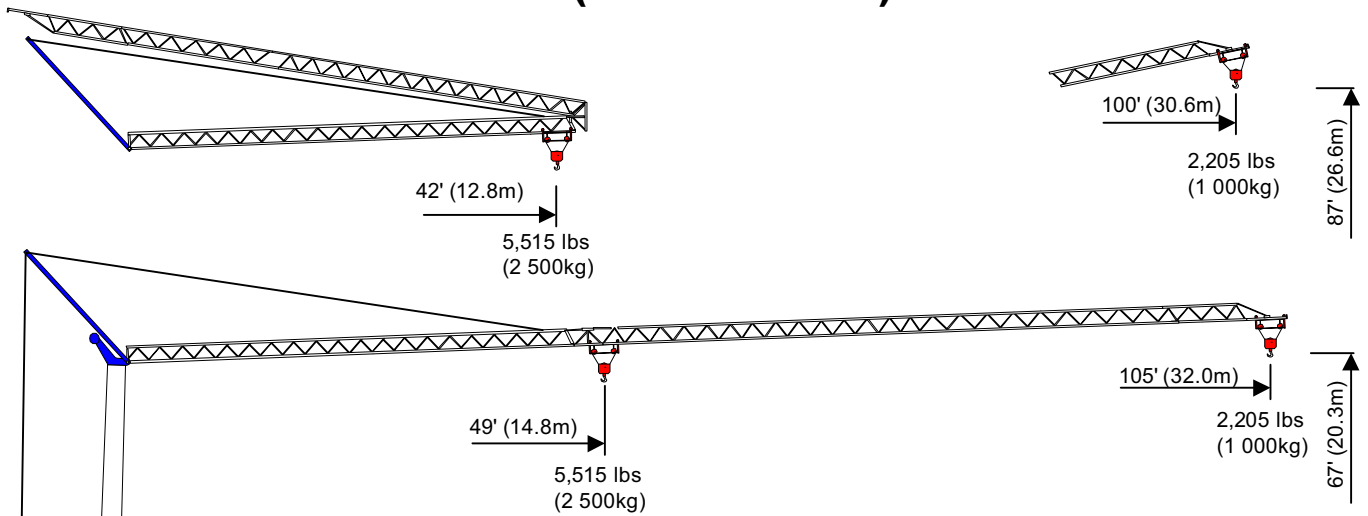


benazzato

Self-Erecting Crane



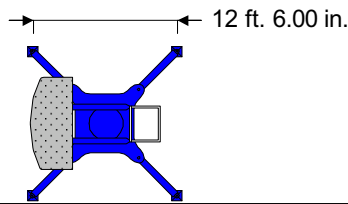
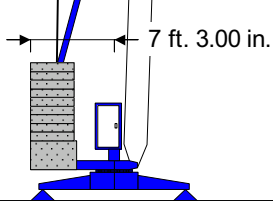
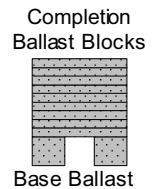
22105 (306)
67' - 105' - 2,205 lbs
(20 - 32 - 1 000)



Power Requirements
 Single Phase OR Three Phase
 240V or 480V

Component Weights

Base Ballast 7,280 lbs X 2 = 14,560 lbs
 C Ballast Blocks 3,090 lbs X 9 = 27,810 lbs
 Total Ballast: = 42,370 lbs
 Crane Weight: = 24,810 lbs
 Total Erected Weight: = 67,180 lbs
 Job Site Axles = 1,875 lbs



Hook	Ft.	49	52	59	66	72	79	85	92	98	105
Radius	Meters	14.8	16	18	20	22	24	26	28	30	32
104'	Lbs	5,513	5,027	4,366	3,859	3,440	3,087	2,822	2,580	2,359	2,205
31.6m	KG	2,500	2,280	1,980	1,750	1,560	1,400	1,280	1,170	1,070	1,000

Central Plains Cranes

Call 913-660-4102

info@centralplainscranes www.centralplainscranes